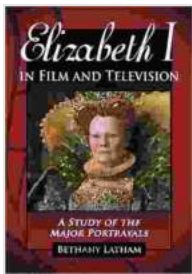


# Study of the Major Portrayals: Delving into the Depictions of Iconic Characters

The portrayal of iconic characters is a captivating aspect of storytelling that has fascinated audiences for centuries. From the enduring tales of mythology to the cinematic masterpieces of today, iconic characters have left an indelible mark on our collective imaginations. This comprehensive study delves into the intricacies of these major portrayals, analyzing their nuances, influences, and impact on popular culture. Through a meticulous examination of diverse mediums, we embark on an enlightening journey that unveils the secrets behind these cherished characters.



## Elizabeth I in Film and Television: A Study of the Major Portrayals by Bethany Latham

★★★★☆ 4.9 out of 5

Language : English

File size : 4637 KB

Text-to-Speech: Enabled

Word Wise : Enabled

Print length : 298 pages



## The Evolution of Hamlet



Hamlet, the enigmatic protagonist of Shakespeare's timeless tragedy, has captivated audiences for over four centuries. His complex character has been interpreted by countless actors, each bringing their unique perspective to the role. From Laurence Olivier's brooding intensity to David Tennant's introspective brilliance, Hamlet's portrayal has evolved over time, reflecting the changing sensibilities and interpretations of society.

This study examines the major portrayals of Hamlet, highlighting the key differences in their interpretations. It analyzes how each actor has shaped the character's motivations, relationships, and inner conflicts. By comparing and contrasting these diverse interpretations, we gain a deeper understanding of Hamlet's multifaceted nature and the enduring power of Shakespeare's work.

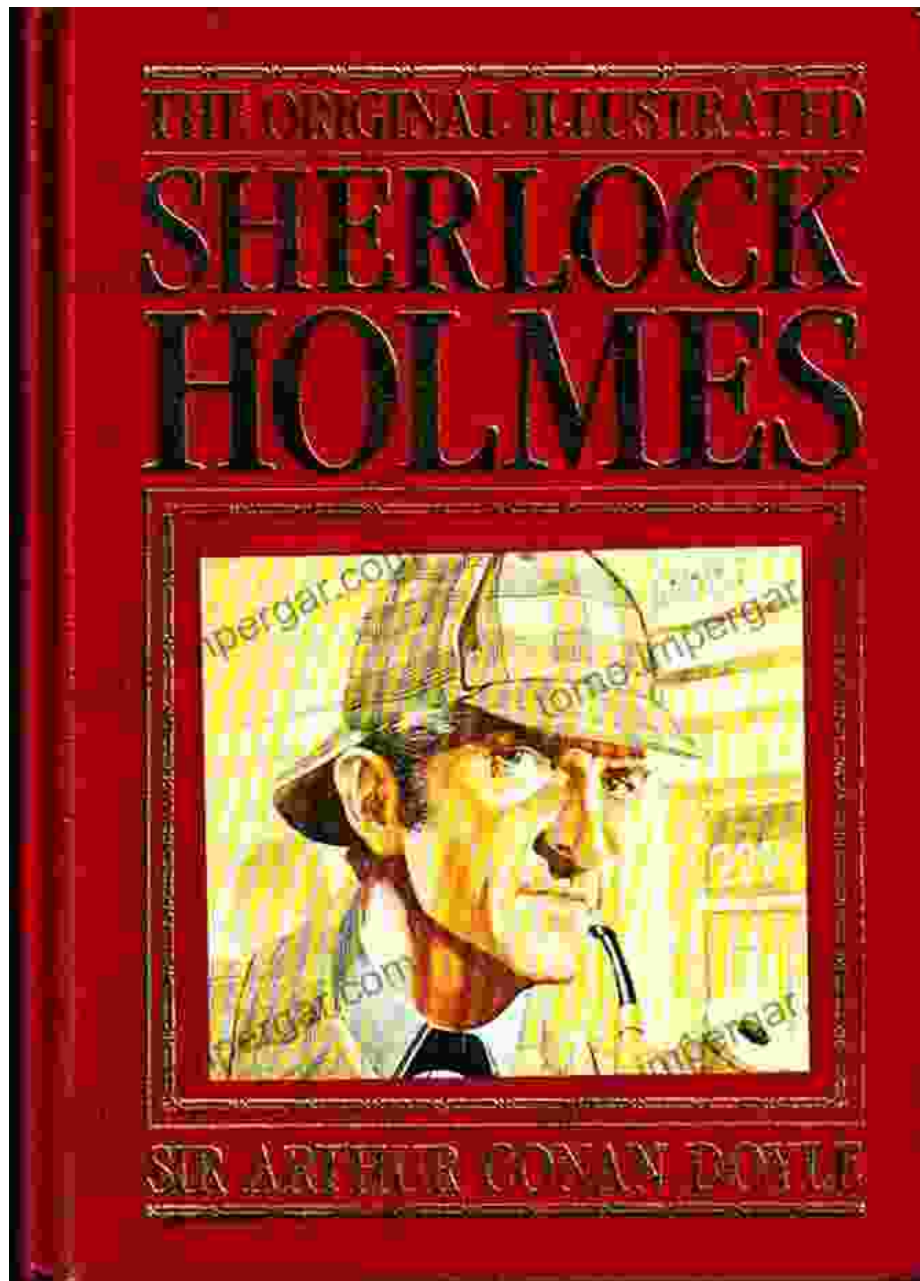
## Elizabeth Bennet: A Modern Heroine



Elizabeth Bennet, the spirited and intelligent heroine of Jane Austen's *Pride and Prejudice*, has become an iconic figure in literature and popular culture. Her wit, independence, and resilience have made her a timeless role model for readers of all ages. This study examines the major portrayals of Elizabeth Bennet, exploring how different actresses have brought her character to life.

From Greer Garson's charming portrayal in the 1940 film adaptation to Keira Knightley's spirited interpretation in the 2005 version, each actress has captured a unique aspect of Elizabeth's personality. This study analyzes these portrayals, highlighting the actresses' choices in portraying her intelligence, her romantic entanglements, and her relationship with her family. By examining the different interpretations of Elizabeth Bennet, we gain a deeper appreciation for the complexities of her character and the enduring appeal of Austen's beloved novel.

## **Sherlock Holmes: The Master Detective**

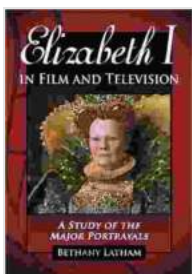


Sherlock Holmes, the brilliant and enigmatic detective created by Sir Arthur Conan Doyle, has been portrayed countless times on stage, screen, and in literature. His sharp intellect, eccentric mannerisms, and unwavering dedication to justice have made him one of the most recognizable and beloved characters in popular culture. This study examines the major

portrayals of Sherlock Holmes, analyzing the actors' interpretations of his intelligence, his methods of investigation, and his complex personality.

From Basil Rathbone's iconic portrayal in the 1939-1946 film series to Benedict Cumberbatch's modern interpretation in the BBC series *Sherlock*, each actor has brought a unique perspective to the character. This study analyzes these portrayals, highlighting the actors' choices in portraying Holmes's brilliance, his eccentricities, and his relationships with his companions. By examining the different interpretations of Sherlock Holmes, we gain a deeper understanding of the multifaceted nature of this legendary detective and the enduring appeal of Conan Doyle's stories.

The study of the major portrayals of iconic characters is a fascinating journey that unveils the complexities of storytelling and the enduring power of these beloved figures. By analyzing the different interpretations of Hamlet, Elizabeth Bennet, and Sherlock Holmes, we gain a deeper understanding of their motivations, relationships, and inner conflicts. These characters have become timeless icons, transcending their original literary and cultural contexts to resonate with audiences of all ages. Through their portrayals in diverse mediums, they continue to inspire, challenge, and entertain, ensuring their enduring place in the hearts and minds of millions.



## Elizabeth I in Film and Television: A Study of the Major Portrayals

by Bethany Latham

★★★★☆ 4.9 out of 5

Language : English

File size : 4637 KB

Text-to-Speech: Enabled

Word Wise : Enabled

Print length : 298 pages

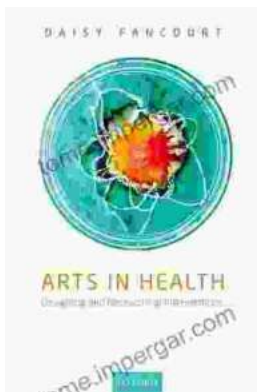
FREE

DOWNLOAD E-BOOK



## French Strategy and Operations in the Great War

An In-Depth Examination of Military Genius As the world commemorates the centennial of the Great War, scholars and historians continue to dissect its complexities. Among the...



## Arts In Health: Designing And Researching Interventions

Delving into the Transformative Power of Arts in Health: A Comprehensive Guide for Healthcare Professionals, Researchers, and Artists In the realm of...